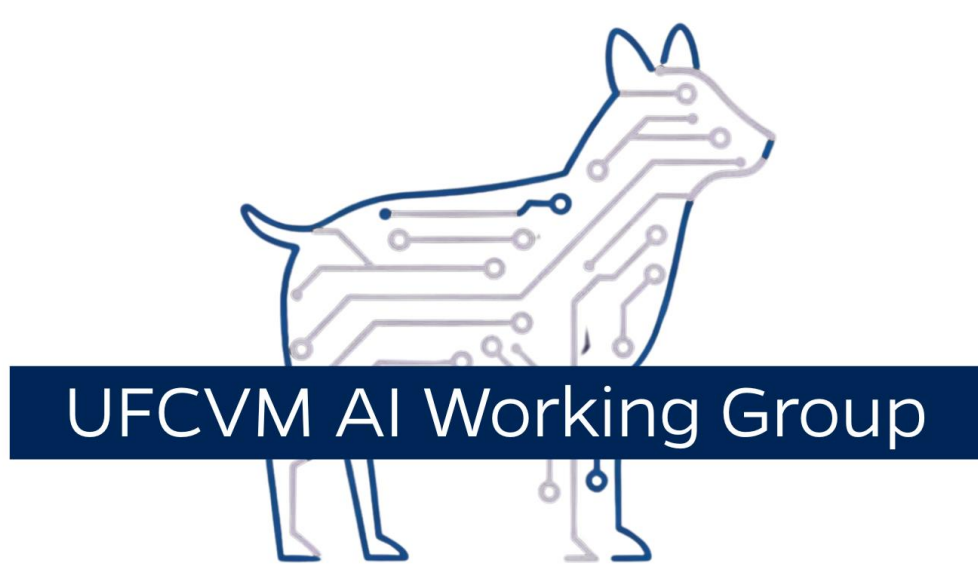




# AI in Veterinary Education

## Student and Faculty Perspectives



Ashley Allen-Durrance, DVM, DACVECC; Sarah A. Bell, MEd, EdD; Cleverson De Souza, DVM, MS, PhD, ACVP; Chen Gilor, DVM, PhD, DACVIM; Amanda M. House, DVM, DACVIM  
Jon Kim, DVM, PhD; Iskande Larkin, PhD; Patrick Larkin, PhD; Rebecca Nance, PhD; Cuong Nguyen, PhD; Janet Robishaw, PhD

### Introduction

Artificial intelligence is becoming increasingly prevalent in various fields, including veterinary education. This research explores the utilization, familiarity, and perception of AI among faculty and students at the University of Florida College of Veterinary Medicine. With the growing role of AI in veterinary practices, understanding these attitudes and integration of AI into education is crucial for future advancements.

### Methodology and Participants

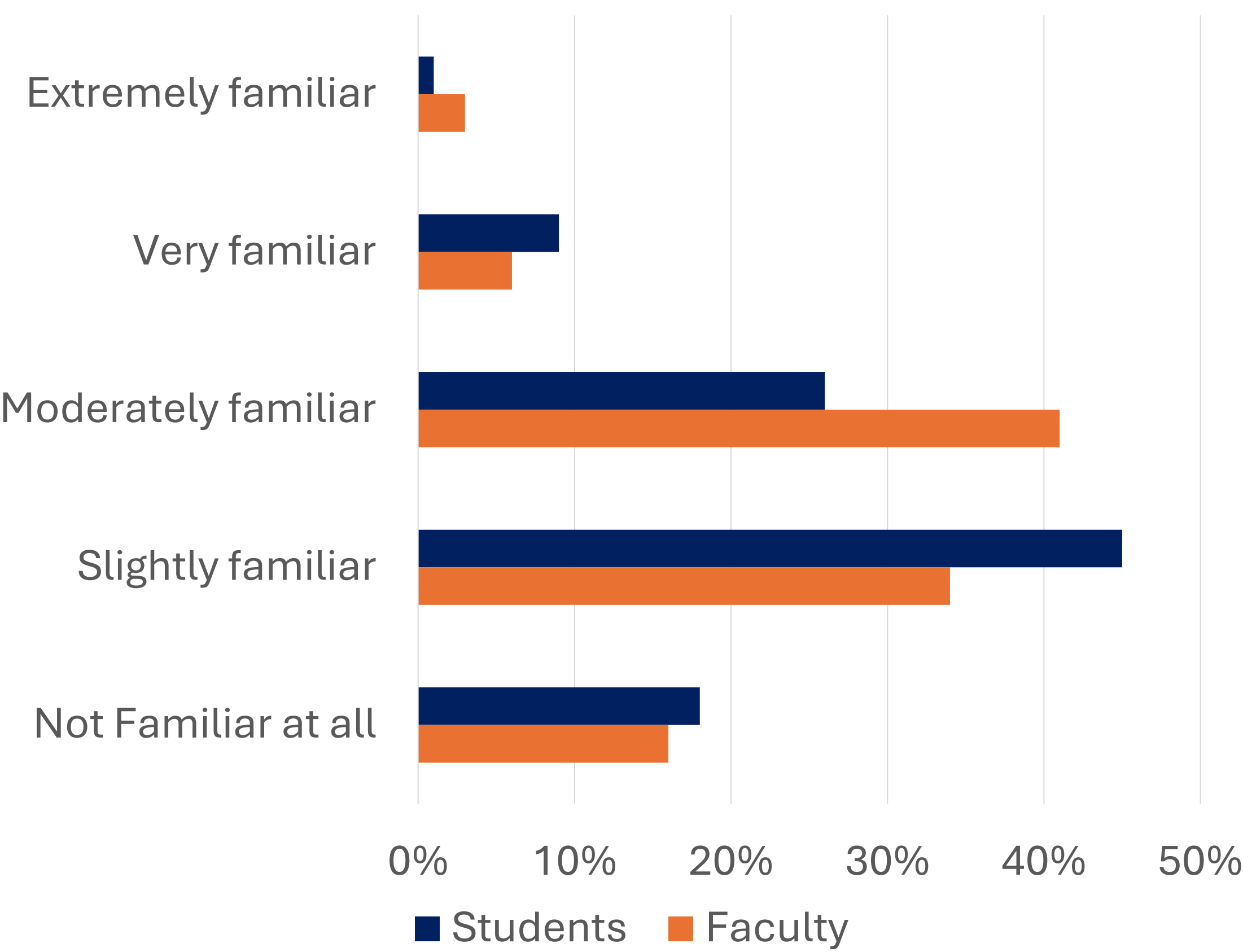
Surveys (Student and Faculty Specific)  
Questions focused on:

- Familiarity with AI
- Current use of AI tools
- Willingness to integrate AI into education
- Perceived barriers to AI adoption

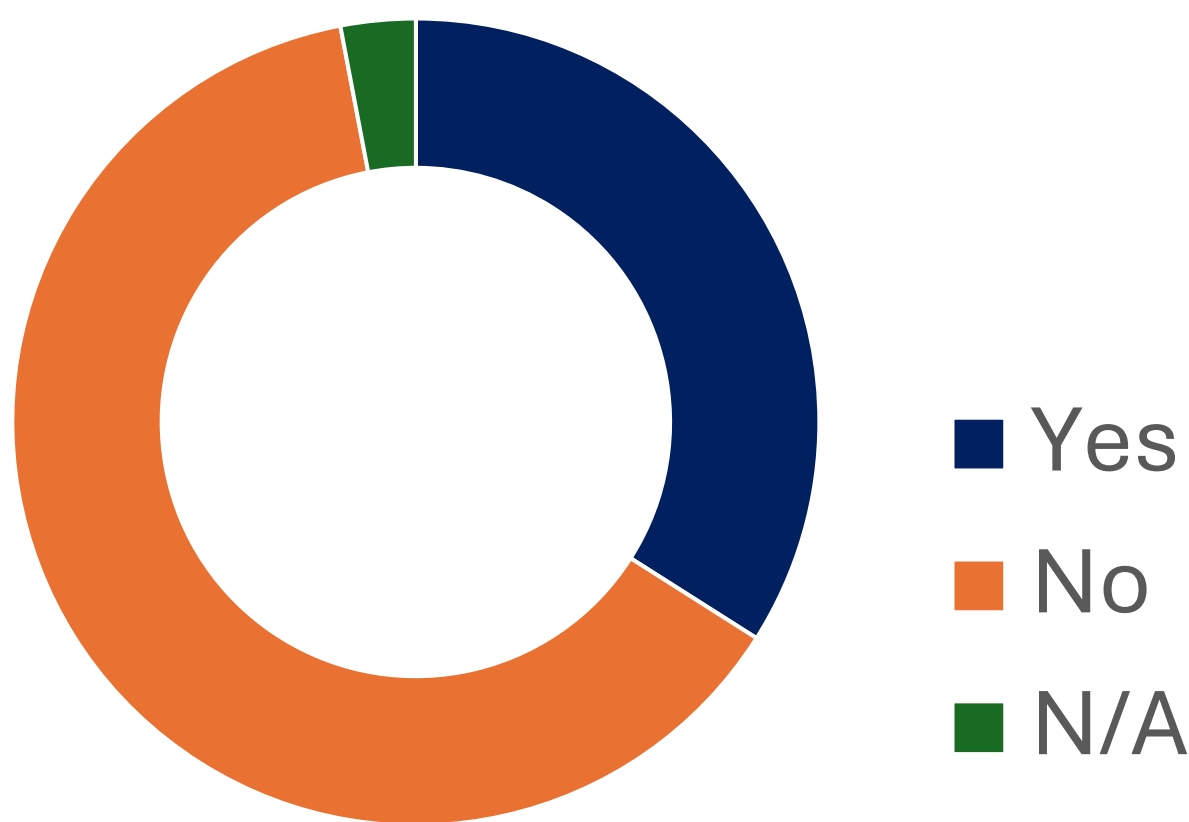
Faculty Participants (n=32)	Student Participants (n=102)
31 in Teaching Positions 1 in Non-Teaching Position	96 in Professional Program 7 in Graduate Program

### Results

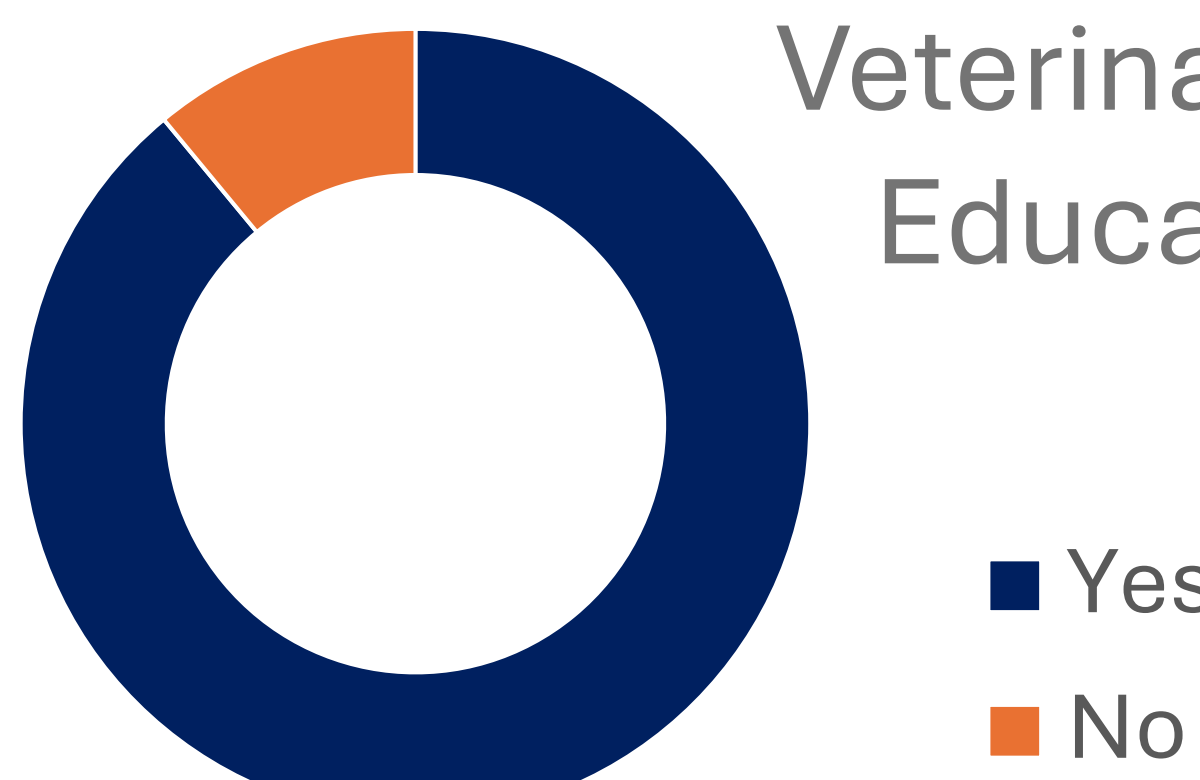
#### Familiarity with AI in Veterinary Medicine



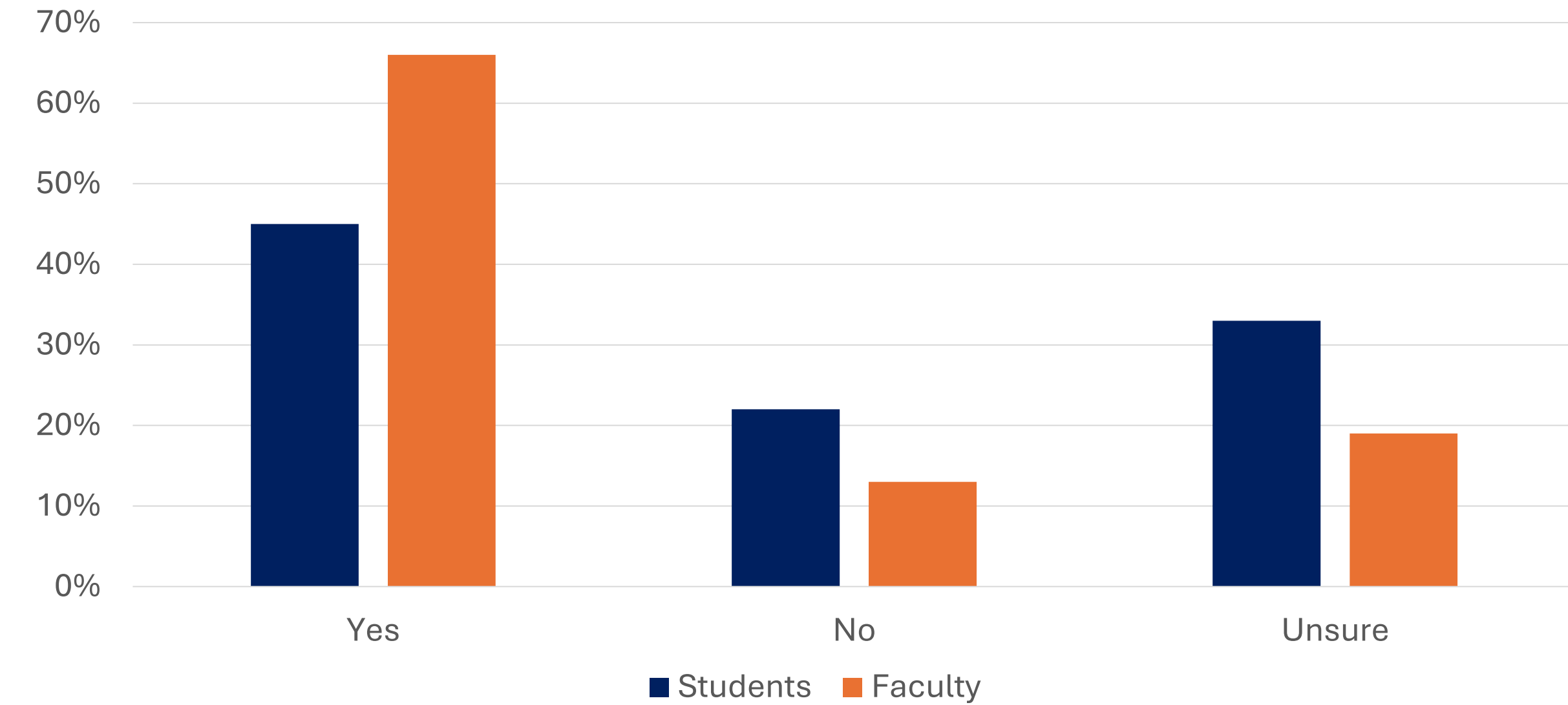
#### Faculty Using AI in Teaching



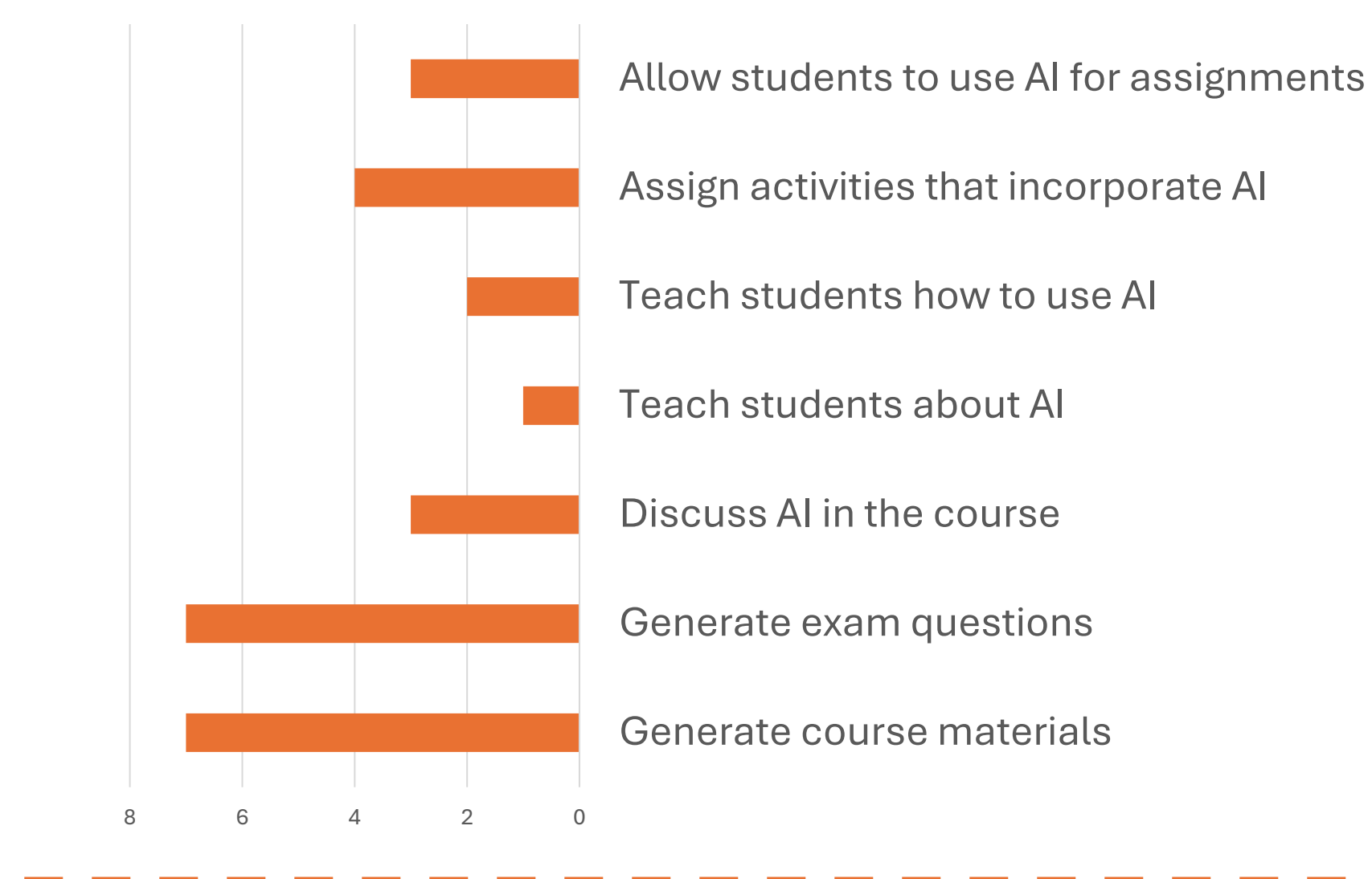
#### Students Encountering AI in Veterinary Education



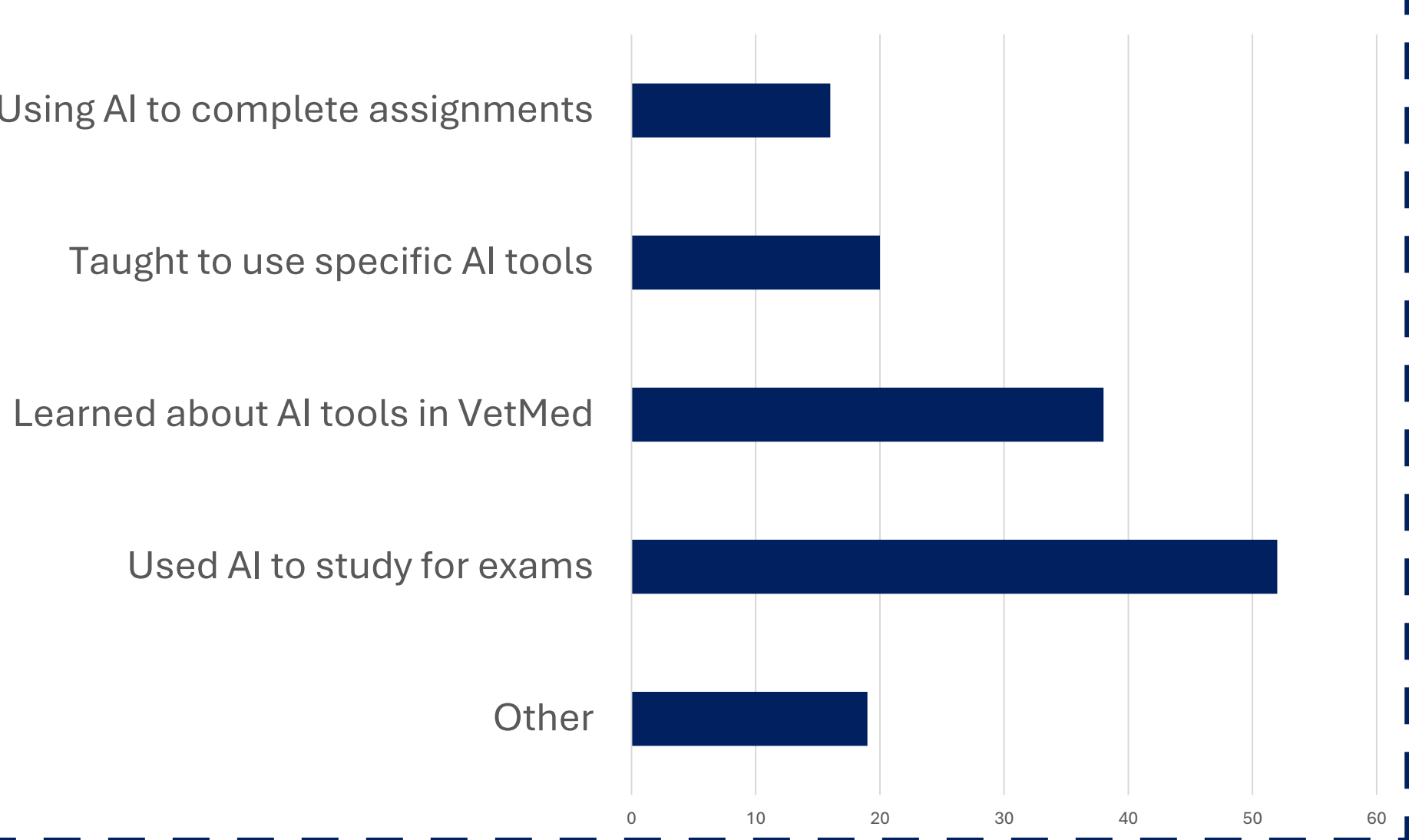
#### Interest in Adding AI Content



#### How Faculty Use AI in Teaching



#### How Student Use AI in Learning



#### AI Tools Faculty Named

ChatGPT  
Copilot  
NaviGator

Canva  
Genially

Perusall

#### AI Tools Students Named

ChatGPT  
Copilot  
NaviGator

NotebookLM

Scite  
Zotero

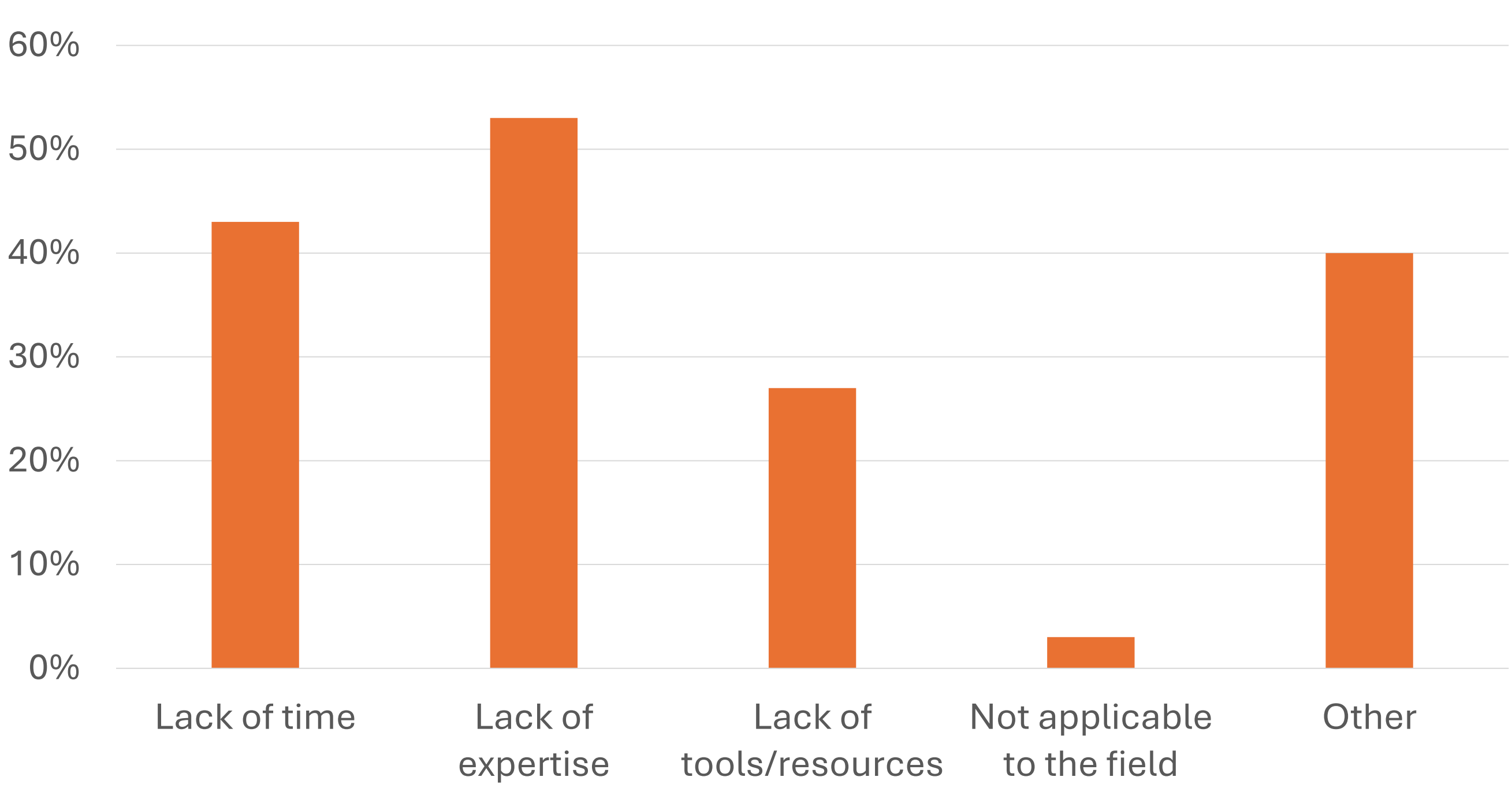
### Conclusions

- AI Familiarity: Room for Growth.** Both faculty and students exhibit moderate familiarity with AI.
- Faculty: Eager but Uncertain.** Sixty-eight percent (68%) of faculty are open to integrating AI into future curricula, although there are concerns about reliability of AI outputs and the expertise required.
- Students: Cautious Optimism.** Students show varied interest, with 67% using AI in their personal life but 45% fully supporting increased AI content in their education.
- Call to Action.** There is a clear (an urgent) need for enhanced AI-related curriculum and targeted professional development for faculty to bridge the knowledge gap and improve AI integration in veterinary education.

### Future Directions

- Develop/implement targeted faculty workshops on AI tools.
- Incorporate structured assignments that teach critical evaluation of AI outputs.
- Foster collaborative efforts to align faculty readiness with student enthusiasm.
- Explore best practices from early adopters and other institutions to integrate AI effectively and ethically.
- Conduct further research to evaluate the long-term impact of AI integration on educational outcomes and clinical practice.

#### Faculty Barriers to AI Use



#### Faculty Interest in Professional Development

