



Beyond the Podium Series

ENSURING ACADEMIC INTEGRITY

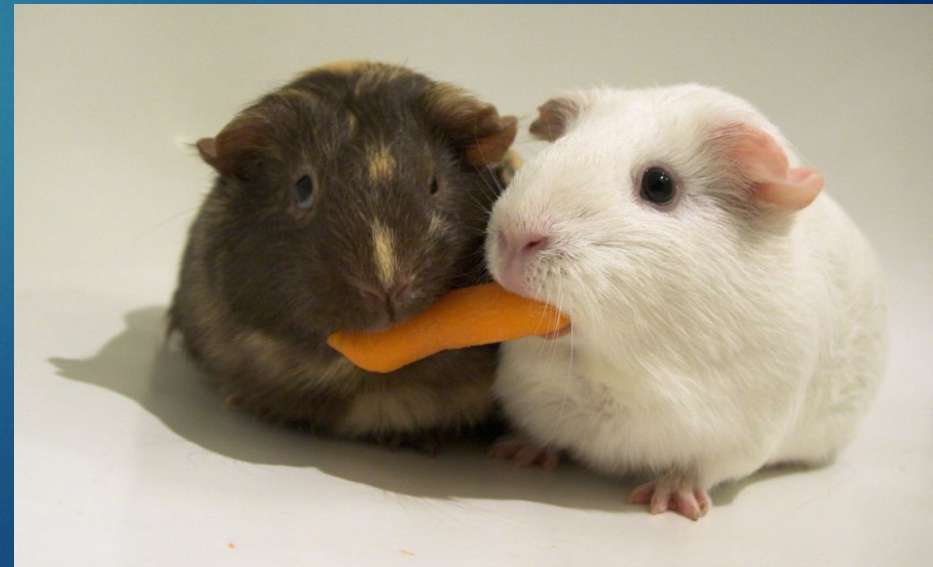
Basic Assessment Strategies

- ▶ “Good practices include....”
 - ▶ Shuffle answer order
 - ▶ Smaller stakes, more frequent exams
 - ▶ Create question banks ([Canvas guide](#) #2947) and question groups ([Canvas guide](#) #2900)



Advanced Assessment Strategies

- ▶ File upload question type (used heavily in PhD degree programs for case analysis)
- ▶ Formula quiz questions ([Canvas guide](#) #2931)
- ▶ User created sections for differentiated assignments, exam appointment times, or multiple exam versions ([Canvas guide](#) # 2630)
- ▶ Short answer questions (case analysis and open-ended response)



Using question banks and groups

HealthSurvey

47 pts

Professional survey planners often interview key people in the organization that is commissioning the survey. The planners have special ways to determine what each person views as desirable accuracy (target margin of error) and how much they think the key figures might vary.

The upcoming Florida Health Services Occupations Survey will be looking at many factors that deal with the working life of licensed nurses, paramedics and therapists in the state. One of the key variables estimated will be the average annual pay of paramedics. Paramedic supervisor Edward Winston was interviewed. From his interview it was determined that he wanted the estimate to have a margin of error of [b1] and the standard deviation in pay was [s1].

For a 95% interval that satisfies this accuracy goal, what is the required sample size?

Group Pick 9 questions, 95 pts per question

Questions will be pulled from the bank: [00Spring2016Exam1A](#)

File Upload (Canvas Guide #2945)

Final Exam

⚠ This is a preview of the published version of the quiz

Started: Feb 12 at 12:51pm

Quiz Instructions



The following quiz contains the final exam file. Please preview or download the file and upload your own document as your response. You have 8-1/2 hours. As soon as you click the "take the quiz" button, your time will start.

A note: You may close out of the exam and your browser at any point during your exam window. Please be aware that if you do this, your time will continue to count down if you have already activated the exam.

After you have uploaded your final exam document, **make sure that you click the "Submit" button to finish the exam and submit your final document.**

Question 1

100 pts

Please use the following file to access your exam: [DBA Final Exam 2015.docx](#)  

Upload

Not saved

Submit Quiz

Formula questions (Canvas Guide #2941)

ClinicTime95 pts

A busy clinic saw a total of [N] clients on the first Monday of last month. For a sample of 29 of these clients, the average time they were at the clinic was [xbar] minutes with a standard deviation of [s] minutes. Make a 95% two-sided interval estimate for the total time (in minutes) that all clients spent at the clinic.

For your answer give the **upper endpoint** of this two-sided interval.

- Notes:
- State your answer to the nearest whole minute, but don't get clinical if Canvas pad
 - For this sample size the correct t-value is 2.0484

Cust.SD.Int.A

The Market Basket grocery hires employees based on how busy the store will be, but also the range in counts (a function of the standard deviation in counts).

The store manager took a random sample of customer counts at the store for 14 r deviation was [s].

Use this information to make a 95% two-sided confidence interval estimate of the **upper limit** of the interval for the standard deviation to **two decimal places**.

Answers:

Variable Definitions

Once you have entered your variables above, you should see them listed here. You can specify the range of possible values for each variable below.

Variable	Min	Max	Decimal Places	Example Value
N	255	311	0	268
xbar	29	68	0	35
s	7	17	0	12

Recompute

Formula Definition

Next you'll need to write the formula or formulas used to compute the correct answer. Just use the same variable names listed above.

Formula

n = 29

tval = 2.0484

factor = (N - n)/(N - 1)

FPCF = sqrt(factor)

cent = N*xbar

SE = s/sqrt(n)

ME = N*tval*SE*FPCF

cent + ME

the last formula row will be used to compute the final answer

Save

Result

= 29

= 2

= 1

= 1

= 9380

= 2

= 1157

= 10537

0

Decimal Places

Generate Possible Solutions

Finally, build as many variable-solution combinations as you need for your quiz.

Offer 15 possible value combinations (max)

allow an error margin of +/- 5

Generate

N	xbar	s	Final Answer
280	44	9	13229 +/- 5
262	65	9	17877 +/- 5
273	32	14	10113 +/- 5

Differentiated Assignments: Sections and Individuals

- Shuffle Answers No
- Time Limit 150 Minutes
- Multiple Attempts No
- View Responses Always
- Show Correct Answers Immediately
- Access Code Healthy
- One Question at a Time No
- Require Respondus LockDown Browser No
- Required to View Quiz Results No
- Webcam Required No

Due	For	Available from	Until
Feb 2 at 8:20pm	Everyone else	Feb 2 at 8:20pm	Feb 2 at 8:20pm
Feb 3 at 4am	MAN4504-033F	Feb 2 at 7pm	Feb 3 at 4am
Feb 3 at 4am	MAN4504-142H	Feb 2 at 7pm	Feb 3 at 4am



Take the Quiz

- Answers No
- Time Limit 150 Minutes
- Multiple Attempts No
- View Responses No
- Access Code Bellagio
- One Question at a Time No
- Require Respondus LockDown Browser No
- Required to View Quiz Results No
- Webcam Required No

Due	For	Available from	Until
Feb 8	1 student	Feb 5 at 8am	Feb 8 at 11:59pm
Feb 21	1 student	Feb 14 at 8am	Feb 21 at 11:59pm



Take the Quiz

Different exam Versions

▼ Assignment Quizzes			
🕒 Exam 1 Version A	Available Multiple Dates	Due Multiple Dates	950 pts
🕒 Exam 1 Version B	Available Multiple Dates	Due Multiple Dates	950 pts
▼ Practice Quizzes			
🕒 Practice Exam for Excel Questions			5 pts

Due	For	Available from	Until
Jan 28	1 student	Jan 28 at 12pm	Jan 28 at 11:59pm
Jan 28	QMB3250-Exam1VersionA	Jan 28 at 3pm	Jan 28 at 11:59pm

Take the Quiz

100

⚠ This is a preview of the published version of the quiz

Quiz Instructions

Question 1

8 pts

Define entrepreneurship. List the steps of the entrepreneurship process and describe each step. In class, we discussed three reasons it's important to think about entrepreneurship as a process. What are those reasons?

B I U A ▾ A ▾ I_x [List Bulleted] [List Numbered] [Table] [Link] [Unlink] [Image] [Pi] [C] T ▾ [Video] [Quote Left] [Quote Right] Font Sizes ▾ Paragraph ▾

p

Quiz saved at 1:01pm

Submit Quiz

What to Expect: Before your Exam

6 Things You Must Do **YOUR**
BEFORE EXAM

- 
1 SIGN UP EARLY
During the first week of classes, schedule appointments for all your exams.
- 
2 CHECK YOUR WEBCAM & MICROPHONE
Make sure your equipment meets ProctorU's technical requirements at <https://www.proctoru.com/portal/uf/techspecs>
Note: Tablets are not sufficient for taking a proctored exam.
- 
3 GET GOOGLE CHROME
Google Chrome is the only supported browser.
- 
4 USE A WIRED CONNECTION
You may experience difficulties in the stability of your internet connection, even with the best wireless connection - the extra load of the proctoring software will slow things down and make it difficult for images and charts to load and to save the answers to your questions. If you do not have an Ethernet cable, buy one and learn how to use it before your first exam.
- 
5 TEST YOUR SYSTEM
Go to <http://www.proctoru.com/testitout> the day before or the day of your exam. Test your system in the same environment in which you'll be testing. Take the extra step to connect with a live proctor.
- 
6 FIND A QUIET, PRIVATE LOCATION
Not in a coffee house, not in a car, not on an airplane. Take your exam at home, a library or any place where you will be uninterrupted.

UF UNIVERSITY of FLORIDA Proctor U

Faculty Expectations of Students

- ▶ Constant reinforcement from faculty in the following ways:
 - ▶ Syllabus
 - ▶ Announcements
 - ▶ Practice assignment
 - ▶ Live lecture
- ▶ Students must test their system (and prove it)

01/19 ProctorU Exam Registration; Sections 058F & 5543 Only! (non-graded)

Published Edit

Overview

Spring 2016: Sections 058F & 5543 ONLY

This non-graded assignment is for students taking their GEB3035 exams online via ProctorU. The purpose of this assignment is to ensure the pre-exam administration success for students testing online. Similar to our test attachment upload assignment, this assignment will ensure students have completed the necessary steps to sign-up for GEB 3035 exams before the day of the exam and ensure ProctorU or GEB3035 technical assistance is available if needed.

Instructions

The ProctorU exam registration instructions are located in the PDF below.

1. **Register for Your Free ProctorU Account:** www.proctoru.com

2. **Create one (1) exam appointment for both GEB 3035 exams (two appointments total).**

The exam start time window usually runs somewhere between 7:45pm and 9:30pm, with 15 minute interval start times in-between. Once a slot is full, you will not have the opportunity to register for that particular time. Starting times closer to 7:45pm usually fill up first. Once the exam is started, students have 60 minutes to complete the exam.

Feel free to register for any exam start time within the exam starting window. If you need to change your exam time for any reason, please contact ProctorU or login and change the time yourself.

3. **Upload a Microsoft Word document or screen shot containing confirmation of your exam registrations.**

Take a screenshot of each successful exam appointment creation (two total) and upload the screenshot file(s) as an assignment attachment(s). We accept ANY type of file for this submission; just make sure there is documentation for both Exam 1 and Exam 2 appointment creations. We also will accept a screenshot upload of the ProctorU email confirmation they email you.

Resources

[ProctorU Registration Instructions](#)

[ProctorU Registration Reminders](#)

[Example A - ProctorU Registration Email Verification](#)

[Example B - ProctorU Registration Screenshot](#)

Points 0

Submitting a file upload

Due	For	Available from	Until
Jan 19	GEB3035-5543	Jan 5 at 12am	Apr 27 at 11:59pm
Jan 19	GEB3035-058F	Jan 5 at 12am	Apr 27 at 11:59pm



TEACHING & LEARNING CENTER

WARRINGTON COLLEGE *of* BUSINESS

Staci Graff
Instructional Designer
staci.graff@warrington.ufl.edu

Any Questions?

