

# Tips for Using Technology in Blended Distance and Face-to-Face Courses

*Dr. Shirley Baker*

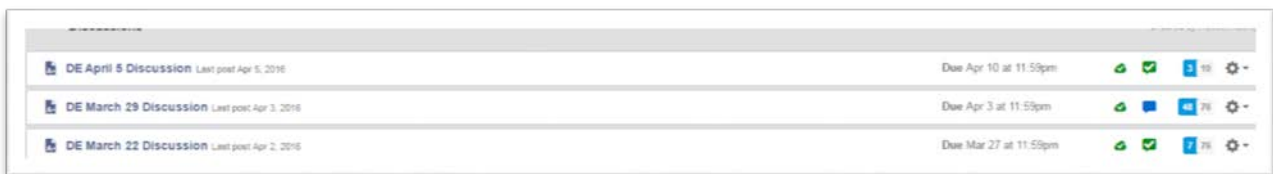
*School of Forest Resources and Conservation*

*sbaker25@ufl.edu*

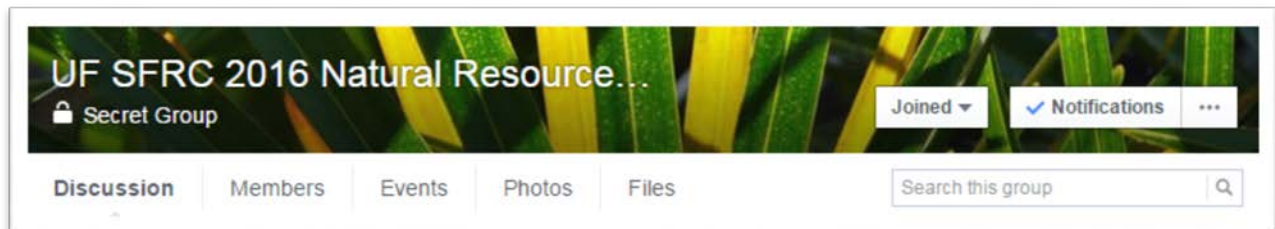
*352-273-3627*

## CANVAS DISCUSSIONS

---



- Have DE students (and absent F2F) conduct asynchronous course discussions in Canvas
- Assign two students per week to lead discussion as a graded assignment



- Set a due date and post a simple grading rubric describing the amount/type of posting required

## FACEBOOK

---

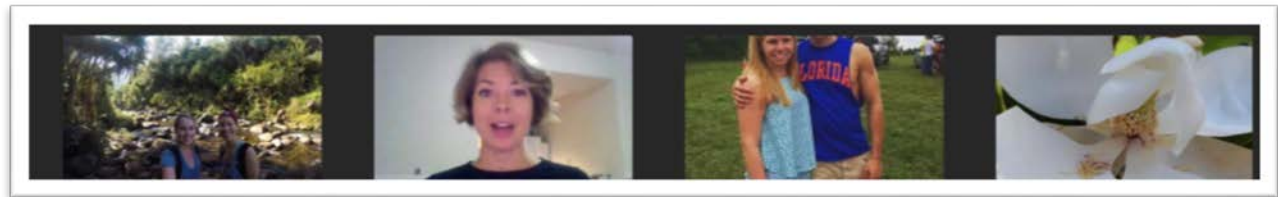
- Create a “secret group” so students feel free to post opinions
- Use FB to continue conversation between DE and F2F students outside the classroom and specific course topics
- Subscribe to FB news pages for material to “share”
- Encourage students to post current events/news related to course topic
- Provide rules of FB etiquette
- Consider making FB an optional assignment – some students are not comfortable with FB

## TodaysMeet

---

<b>Listen</b>	<b>Talk</b>
good morning! <small>a day ago by Mike_S.</small>	Nickname:
Hi Mike and Wendy	

- Allows DE students to join live-streamed F2F discussions synchronously
- Have F2F students say their name so DE students know who is speaking
- Designate a F2F student to interact synchronously with the DE students on TodaysMeet
  - Bring the DE student's comments to the attention of the classroom
  - Write brief summaries of classroom discussion on TodaysMeet



- <https://todaysmeet.com/>

## VOICETHREAD

---

- Post a course introduction video before the semester begins
  - Post a link to a VT tutorial
- Have both DE and F2F students post introductions of themselves
  - Provide some "leading" questions for the students to answer
  - Use a simple rubric requiring DE and F2F students to respond to VT introductions
- Have DE students post narrated PPT presentations of class assignments
  - Require DE and F2F students to watch VT presentations and ask questions (comment), to which the author responds
- <http://ufl.voicethread.com>

